



RENESEED™

THE SEED OF YOUTH



SMART DATA
Inside



Retinol & retinoic acid-like
for day & night treatments



Pore size
minimizer



Epidermal
lipid filler



WILD PLANTS
AS BIOFACTORIES

- INCI name of the active ingredient: Nicotiana Benthamiana Hexapeptide-40 sh-Polypeptide-76
- Non-GMO
- Recommended dose: 1.5-2%
- Solubility: Water soluble

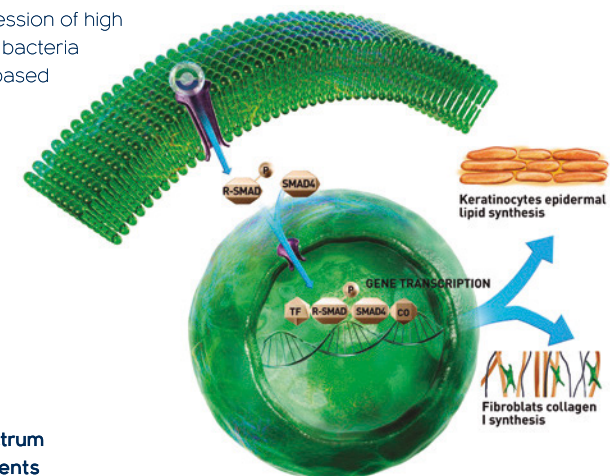
DESCRIPTION & MECHANISM

N. benthamiana is a historical Australian **plant-based model system** for the transient expression of high purity proteins in a **non-GM** system. As opposed to recombinant production by Gram(-) bacteria which may contain endotoxins, synthesis of proteins in plants allows to obtain **safe** plant-based biotechnological ingredients with proper 3D structure and **high activity**

A **well-balanced TGFβ2** signaling is essential to sustain the skin in a healthy and functional condition and overall to support maintenance of a young appearance. However, the **aging process** on the skin induced by internal and external factors (photoaging, hormonal aging, smoke, diet, stress) affects TGFβ2 levels, and therefore its activity

Reneseed™ contains plant-Transforming Growth Factor Beta-2 (**plant-TGFβ2**), the **seed of youth of our skin**, as it is implicated in the extracellular matrix protein synthesis and the production of epidermal lipids, improving the skin integrity and protection. It has a **retinol and retinoic acid-like activity** in terms of collagen I production efficacy

Reneseed™ helps your skin to recover its own beauty that is sleeping inside with its **broad-spectrum antiaging** properties and **pore size minimizer efficacy** for night but also for day treatments



IN VITRO EFFICACY

Skin integrity improvement (epidermal lipids)

✓ Up-regulation of **ABCA12, K1, ALOXE3, CERS1, PNPLA1** and **FLG gene** improving the **skin integrity & protection**

Collagen booster, retinol & retinoic-acid like

✓ **+31% collagen I** vs basal

✓ **Retinol & retinoic acid-like** activity vs basal in collagen I synthesis

✓ **Four times** more potent than **retinol** vs basal

✓ **Synergistic effect with retinol & retinoic acid** vs basal in collagen I synthesis

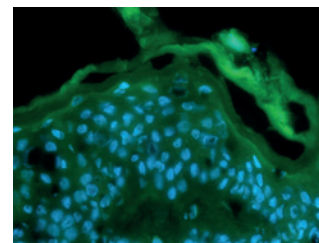
HUMAN SKIN EXPLANTS EFFICACY

Reinforcement of epidermal thickening

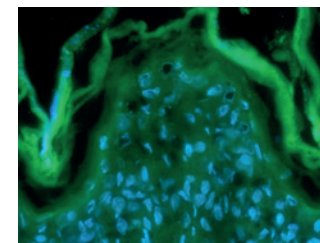
✓ **+20% epidermal thickness** vs placebo

Epidermal lipid filler

✓ **+8% neutral lipids** vs placebo



Placebo
(neutral lipids in green, T8 days)



1.5% Reneseed™
(neutral lipids in green, T8 days)

IN VIVO EFFICACY

The seed of youth

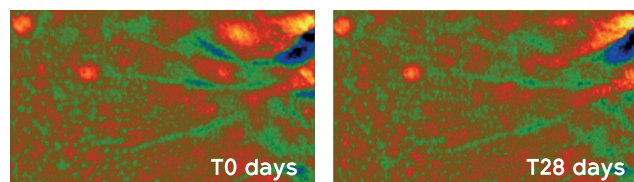
20 women (45-65 years old) applied a cream with **2% Reneseed™** on half face, twice daily for 28 days. A placebo was applied on the other half of the face

Wrinkle smoothing

✓ **-16%, -11% and -14% wrinkle count, volume and depth**, respectively, in 28 days

✓ **Up to 42%, 31% and 37% decrease in wrinkle count, volume and depth**, respectively, in 28 days

✓ **-6.9% skin roughness (Rz)** in 28 days



-28% wrinkle volume
-19% wrinkle depth

Skin radiance

✓ **+7% and +11% skin radiance** in 7 and 14 days

✓ **Up to 42% increase of skin radiance** in 28 days

Skin thickness

✓ **+5% skin thickness** in 28 days

✓ **Up to 16% more skin thickness** in 28 days

Firmness & Elasticity

✓ **+11% and +6% firmness and elasticity**, respectively, in 28 days

✓ **Up to 22% and 17% more firmness and elasticity**, respectively, in 28 days

Pore size minimizer

✓ **-10% and -12% pore size** in 7 and 28 days

✓ **Up to 44% smaller pore size** in 28 days

Neck definition



Skin moisturizing

✓ **+9% and +12% skin hydration** in 7 and 14 days

✓ **-6% and -7% TEWL** in 7 and 14 days

✓ **Up to 28% more hydration** in 28 days

✓ **Up to 22% less TEWL** in 28 days